

Spec Grade
PROlite LED Lighting™

A Division of Emergensee® Lighting, Inc.



Job Name: _____

Type: _____

Part #: _____

Notes: _____

PDC150-90

CUT-OFF LED WALLPACK LUMINAIRE



FULL CUT-OFF, HEAVY-DUTY HOUSING

The ADC150-90 is a Medium 14" Wallpack with a Die Cast Aluminum Body and Impact Resistant Glass Lens

WET LOCATION, IP-65 RATED

Engineered and Constructed for Exterior Environments

EASY TO INSTALL MOUNTING

The ADC150-90 can be Surface Mounted over an Existing 4" Outlet Box or Surface Wired through a 1/2" Conduit Entry. Additional Conduit entries Available for Photocells & other Components

120-277V STANDARD TYPE VS DISTRIBUTION

OPERATING TEMPERATURE -20C TO

40C 0C - 40C with EM Pack Option

PRODUCT APPLICATIONS

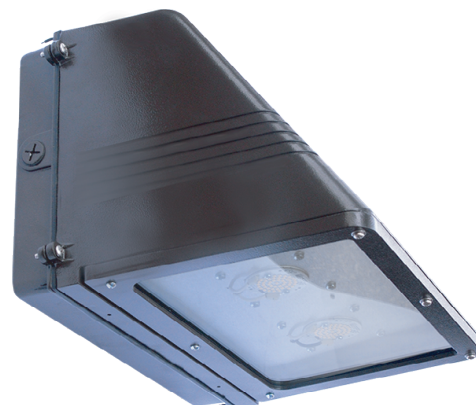
Building Entrances Bridges
Walkways Catwalks
Tunnels Stairwells
Loading Docks

PRODUCT SPECIFICATIONS

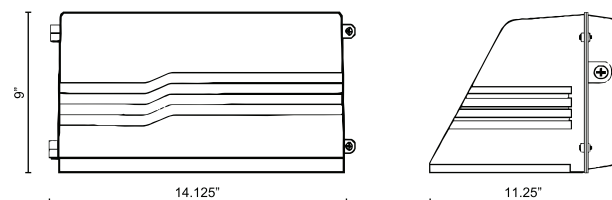
| NOMINAL WATTAGE | SYSTEM WATTAGE | CCT | LUMENS | EFFICACY | DLC LISTING |
|-----------------|----------------|-------|-----------|----------|-------------|
| 12W | 12.65 | 3000K | 1,530.00 | 120.95 | PREMIUM |
| 12W | 12.65 | 4000K | 1,606.50 | 127.00 | PREMIUM |
| 12W | 12.65 | 5000K | 1,686.83 | 133.35 | PREMIUM |
| 24W | 23.68 | 3000K | 3,060.00 | 129.22 | PREMIUM |
| 24W | 23.68 | 4000K | 3,213.00 | 135.68 | PREMIUM |
| 24W | 23.68 | 5000K | 3,373.65 | 142.47 | PREMIUM |
| 36W | 34.27 | 3000K | 4,590.00 | 133.94 | PREMIUM |
| 36W | 34.27 | 4000K | 4,819.50 | 140.63 | PREMIUM |
| 36W | 34.27 | 5000K | 5,060.48 | 147.66 | PREMIUM |
| 48W | 46.60 | 3000K | 6,120.00 | 131.33 | PREMIUM |
| 48W | 46.60 | 4000K | 6,426.00 | 137.90 | PREMIUM |
| 48W | 46.60 | 5000K | 6,747.30 | 144.79 | PREMIUM |
| 60W | 56.83 | 3000K | 7,650.00 | 134.61 | PREMIUM |
| 60W | 56.83 | 4000K | 8,032.50 | 141.34 | PREMIUM |
| 60W | 56.83 | 5000K | 8,434.13 | 148.41 | PREMIUM |
| 72W | 67.65 | 3000K | 9,180.00 | 135.70 | PREMIUM |
| 72W | 67.65 | 4000K | 9,639.00 | 142.48 | PREMIUM |
| 72W | 67.65 | 5000K | 10,121.00 | 149.61 | PREMIUM |

ORDERING INFORMATION:

| MODEL | WATTAGE | COLOR TEMPERATURE (CCT) | HOUSING COLOR | OPTIONS & ACCESSORIES |
|-----------|--|--|--|---|
| PDC150-90 | | | | |
| PDC150-90 | 12W 12 WATTS 24W 24 WATTS 36W 36 WATTS 48W 48 WATTS 60W 60 WATTS 72W 72 WATTS | 27K 2700K - WARM WHITE 30K 3000K - WARM WHITE 35K 3500K - NEUTRAL WHITE 40K 4000K - NEUTRAL WHITE 50K 5000K - COOL WHITE 55K 5500K - DAYLIGHT | BZ BRONZE (STANDARD) WH WHITE BL BLACK SL SILVER CC CUSTOM COLOR | PC1 120V PHOTOCELL PC2 208/277V PHOTOCELL MS MOTION SENSOR MS-DS2 MOTION SENSOR WITH BILEVEL DIMMING D1 0-10V DIMMING D2 STEP DIMMING (120V ONLY) EM EMERGENCY BATTERY PACK V1* 480/347V INPUT (120-277V STANDARD) *NOT AVAILABLE WITH EM, PHOTOCELL OR MOTION SENSOR |



PRODUCT DIMENSIONS



POWER

POWER FACTOR >0.90 - THD <20