

**PROlite** LED Lighting™

A Division of Emergence® Lighting, Inc.



TYPE: \_\_\_\_\_ DATE: \_\_\_\_\_

JOB NAME: \_\_\_\_\_

CONTRACTOR: \_\_\_\_\_

CATALOG NO: \_\_\_\_\_

NOTES: \_\_\_\_\_

# PB3Q PB4Q

## Reveal Round & Square Bollards

The PB3Q and PB4Q EasyLED Reveal Cutoff Bollards with polycarbonate lenses and sealed optical compartments are designed to replace HID lighting systems up to 70w MH or HPS. These fixtures are ideal for retail centers, industrial parks, schools and universities, public transit and airports, office buildings and medical facilities.

### Specifications and Features:

#### Housing:

Extruded Aluminum Housing with Flush Mounting Base & Vandal-Resistant Screws, Flat Top, Sealed Driver Compartment.

#### Listing & Ratings:

CSA: Listed for Wet Locations, ANSI/UL 1598, 8750  
IP66 Sealed LED Compartment.

#### Finish:

Textured Architectural Bronze or Black Powdercoat Finish Over a Chromate Conversion Coating. Custom Colors Available Upon Request.

#### Lens:

Clear Polycarbonate or SoftLED LumaLens Opal Polycarbonate Vandal-Resistant Inner Lens to Seal LED Array.

#### Mounting Options:

Mounting Kit with 8" Anchor Bolts, Included.

#### EasyLED LED:

Aluminum Boards

#### Wattage:

Array: 16.6w, System: 20.2w; (70w HID Equivalent)

#### Driver:

Electronic Driver, 120-277V, 50/60Hz or 347V, 50/60Hz; Less Than 20% THD and PF>0.90. Standard Internal Surge Protection 2kV. 0-10V Dimming Standard for a Dimming Range of 100% to 10%; Dimming Source Current is 150 Microamps.

#### Controls:

Fixtures Ordered with Factory-Installed Motion Sensor Controls are Internally Wired for Switching and/or 1-10V Dimming Within the Housing. Remote Direct Wired Interface of 1-10V Dimming is Not Implied and May Not Be Available, Please Consult Factory. Fixtures are Tested with LEPC Controls and May Not Function Properly With Controls Supplied By Others. Fixtures are NOT Designed for Use with Line Voltage Dimmers.

#### Warranty:

5-Year Warranty for -40°C to +50°C Environment.

See Page 2 for Projected Lumen Maintenance Table.

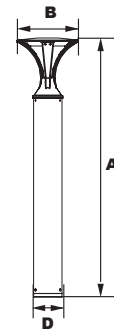


**B3Q - Reveal Round Bollard**

**B4Q - Reveal Square Bollard**

**Shown with "S3" Sensor**

**Shown with GFCI**



#### Dimensions

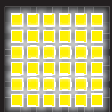
<b>Width (B)</b>	10 1/4" (260mm)
<b>Diameter (D)</b>	4 3/4" (120mm)
<b>Height (A)</b>	43 3/8" (1,095mm)

#### Certification & Listings:



### Order Information Example: PB4QF1X16U5KCZ36SF

	<b>F</b>	<b>1X16</b>						
<b>Model</b>	<b>Optics</b>	<b>Wattage</b>	<b>Driver</b>	<b>CCT</b>	<b>Lens</b>	<b>Color</b>	<b>Height</b>	<b>Options</b>
<b>PB3Q</b> =Reveal Round Bollard <b>PB4Q</b> =Reveal Square Bollard	<b>F</b> =Wide Beam Spread	<b>1X16</b> =16w	<b>U</b> =120-277V <b>C</b> =347V	<b>4K</b> =4000K <b>5K</b> =5000K	<b>C</b> =Clear Polycarbonate Array Lens <b>L</b> =SoftLED LumaLens Opal Polycarbonate Array Lens	<b>Z</b> =Bronze <b>B</b> =Black <b>C</b> =Custom (Consult Factory)	<b>(Leave Blank)</b> =43 3/4" Standard Height <b>36</b> =36" Height <b>30</b> =30" Height	<b>SF</b> =Single Fuse (120-277V Only) <b>DF</b> =Double Fuse (120-277V Only) <b>SP</b> =Surge Protection <b>GF1</b> =GFCI Outlet, 15A, 120V <b>S3</b> =Internal Microwave Sensor (120-277V Only)



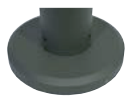
# PROlite LED Lighting™

A Division of Emergence® Lighting, Inc.



TYPE: \_\_\_\_\_ DATE: \_\_\_\_\_  
 JOB NAME: \_\_\_\_\_  
 CONTRACTOR: \_\_\_\_\_  
 CATALOG NO: \_\_\_\_\_  
 NOTES: \_\_\_\_\_

## Accessories & Replacement Parts:



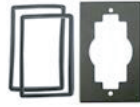
**BREBASE\***



**P17122**



**P17121**



**BOADP1**

\*Shown Mounted

### Mounting Accessories (Order Separately, Field Installed)

**BREBASE\*** Bollard Retrofit Base Kit Adapts New Bollards to Most Existing Bolt Patterns. Fits all LEPG Bollards. Die Cast with Powdercoat Finish, Hardware Included. 11½" Dia. x 1½" H

\*Specify Color: Z=Bronze, B=Black, C=Custom (Consult Factory)

### Accessories (Order Separately, Field Installed)

P17122 Remote Programming Tool for P17121

### Replacement Parts (Order Separately, Field Installed)

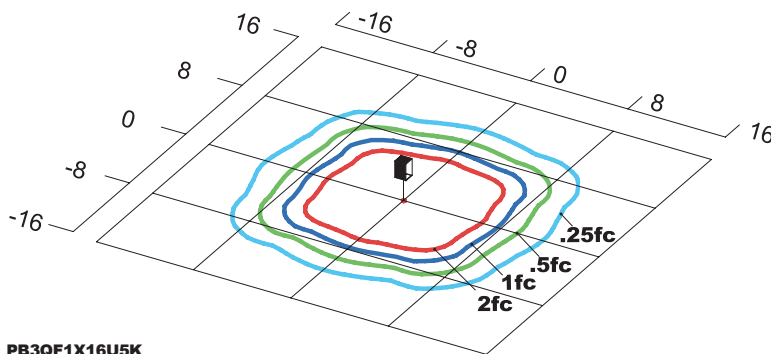
P17121 Internal Microwave Sensor (120-277V Only)

B3LL SoftLED LumaLens Opal Polycarbonate Array Lens

B4LL SoftLED LumaLens Opal Polycarbonate Array Lens

BOADP1 Adapter Plate with Gaskets for Outlet Boxes. Fits LEPG Round Bollards. Die Cast with Bronze Powdercoat Finish.

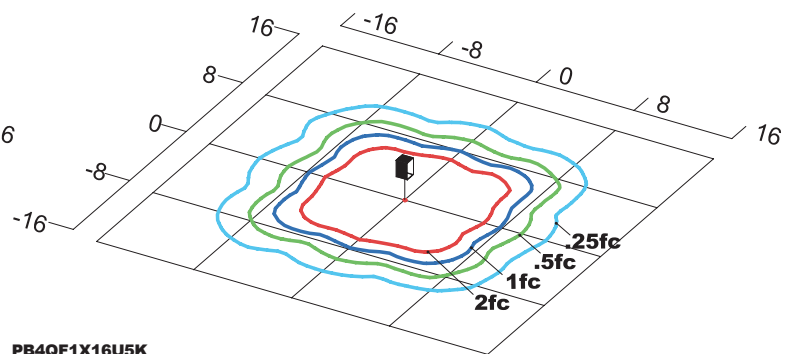
## Photometric Data



**PB3QF1X16U5K**

Type V

Grid in feet, Mounting Height = 3.5 ft.



**PB4QF1X16U5K**

Type V

Grid in feet, Mounting Height = 3.5 ft.

## Photometric Performance

LED Board Watts	Drive Current (mA)	Input Watts	Optics	5000 CCT 80 CRI					4000 CCT 80 CRI				
				Lumens	LPW	B	U	G	Lumens	LPW	B	U	G
16w	525	20	B3 Type V	1,603	80	1	2	1	1,539	77	1	2	1
			B4 Type V	1,678	84	1	2	1	1,611	81	1	2	1

## Projected Lumen Maintenance

Data shown for 5000 CCT				Compare to MH			
TM-21-11	Input Watts	Initial	25,000 Hrs	50,000 Hrs	100,000 Hrs	Calculated L70@ 25°C	
B3 L70 Lumen Maintenance @ 25°C / 77°F	20	1.00	0.96	0.92	0.84	187,000	
B4 L70 Lumen Maintenance @ 25°C / 77°F	20	1.00	0.96	0.92	0.84	187,000	
TM-21-11	Input Watts	Initial	25,000 Hrs	50,000 Hrs	100,000 Hrs	Calculated L70@ 50°C	
B3 L70 Lumen Maintenance @ 50°C / 122°F	20	1.00	0.94	0.87	0.74	117,000	
B4 L70 Lumen Maintenance @ 50°C / 122°F	20	1.00	0.93	0.87	0.73	113,000	
TM-21-11	Input Watts	Initial	25,000 Hrs	50,000 Hrs	100,000 Hrs	Calculated L80@ 40°C	
B3 L80 Lumen Maintenance @ 40°C / 104°F	20	1.00	0.97	0.93	0.87	151,000	
B4 L80 Lumen Maintenance @ 40°C / 104°F	20	1.00	0.97	0.93	0.86	144,000	

### NOTES:

1. Projected per IESNA TM-21-11. Data references the extrapolated performance projections for the 525mA base model in a 25°C ambient, based on 10,000 hours of LED testing per IESNA LM-80-08.
2. Compare to MH box indicates suggested Light Loss Factor (LLF) to be used when comparing to Metal Halide (MH) systems.